

HI FIVE

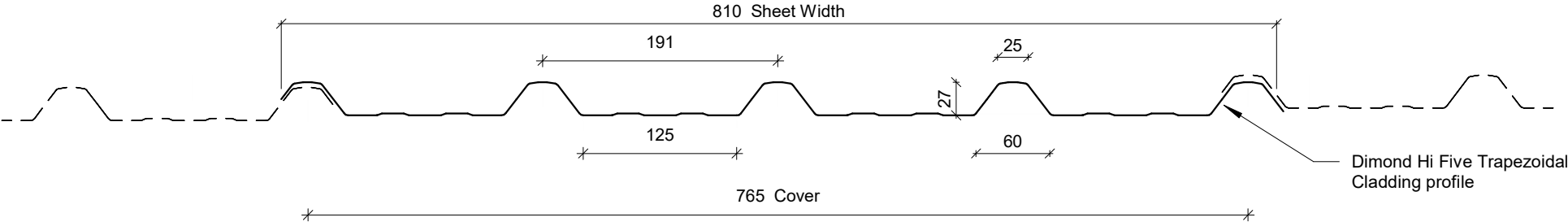
RESIDENTIAL HORIZONTAL WALL CLADDING

DETAILS:

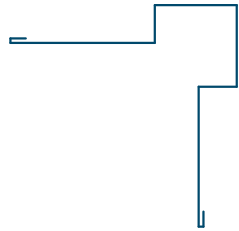
REV: DATE:

HFRHC00	Cover Sheet	1	July 2025
HFRHC01	Profile Summary	1	July 2025
HFRHC02	Typical Flashing Details	1	July 2025
HFRHC03	Barge Flashing Detail	1	July 2025
HFRHC04	External Corner Detail	1	July 2025
HFRHC05	Internal Corner Detail	1	July 2025
HFRHC06	Base Detail	1	July 2025
HFRHC07	Soffit Detail	1	July 2025
HFRHC08	Window/ Door Head Detail	1	July 2025
HFRHC09	Window/ Door Jamb Detail	1	July 2025
HFRHC10	Window Sill Detail	1	July 2025
HFRHC11	Meterbox Head Detail	1	July 2025
HFRHC12	Meterbox Jamb Detail	1	July 2025
HFRHC13	Meterbox Sill Detail	1	July 2025
HFRHC14	Pipe Penetration Detail	1	July 2025
HFRHC15	Cladding to Concrete Junction Detail	1	July 2025
HFRHC16	Cladding to Brick Junction Detail	1	July 2025
HFRHC17	Cladding to Panel Junction Detail	1	July 2025
HFRHC18	3D Window Flashing Detail	1	July 2025

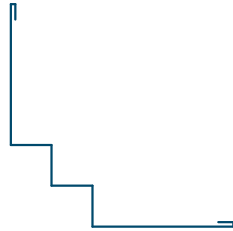
PROFILE OVERVIEW	
MINIMUM PITCH	3°
RIB TYPE	Low
RIBS PER SHEET	5 Ribs per sheet
WIDTH	765mm Cover, 810mm Sheet



Profile Summary



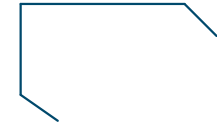
External Corner Flashing



Internal Corner Flashing



Window Head Flashing



Barge Flashing



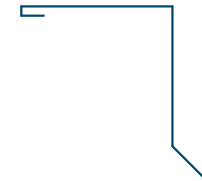
Window Sill Flashing



Base Flashing



Window Jamb Flashing



Soffit Flashing

Typical Flashing Details

Barge flashing to match roofing.
Materials & Fixings as per Dimond
Technical Data, E2/AS1 & MRM
Code of Practice

Cavity Batten

Wall Underlay
(shown dashed)

Prefinished screw with
neoprene washer

Roof framing
(indicative only)

Dimond Hi Five Horizontal
fixed Wall Cladding profile

Dimond Roofing Profile

Roof Underlay
(shown dashed)

Purlins
(indicative only)

Prefinished screw with
neoprene washer

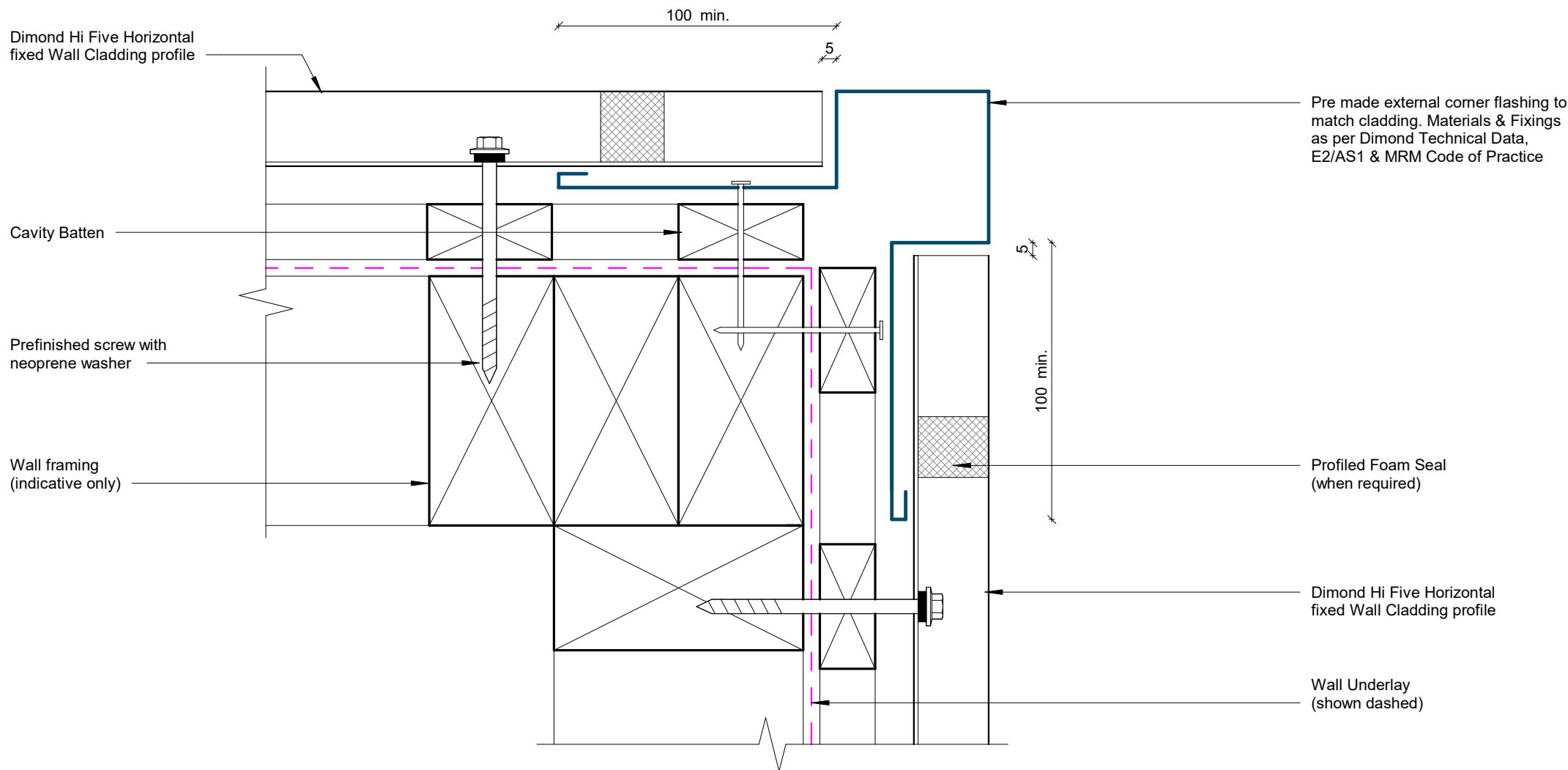
COVER DIMENSIONS AS PER E2/AS1	Z
SITUATION 1 Low, Medium & High Wind Zones where roof pitch $\geq 10^\circ$ (Excludes any soft edge or turn-down)	50 MIN
SITUATION 2 All roof pitches in Very High zone. Low, Medium & High Wind Zones where roof pitch $\leq 10^\circ$ (Excludes any soft edge or turn-down)	70 MIN
SITUATION 3 All roof pitches in Extra High zone. (Excludes any soft edge or turn-down)	90 MIN

Wall framing
(indicative only)

GENERAL NOTE

Cavity battens or timber framing that contain copper must be separated from steel cladding by a strip of wall or roof underlay or DPC.

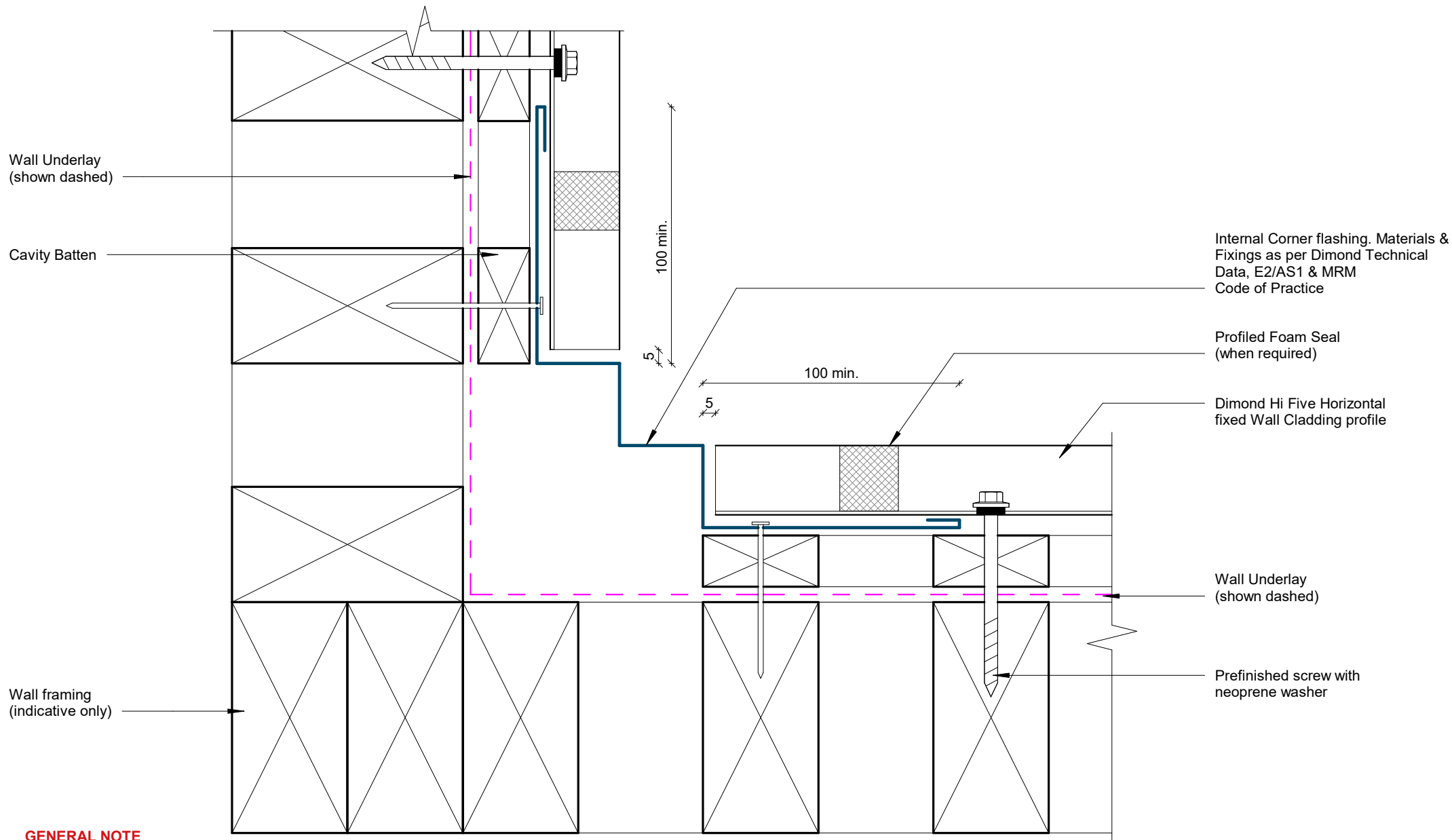
Barge Flashing Detail



GENERAL NOTE

Cavity battens or timber framing that contain copper must be separated from steel cladding by a strip of wall or roof underlay or DPC.

External Corner Detail



GENERAL NOTE

Cavity battens or timber framing that contain copper must be separated from steel cladding by a strip of wall or roof underlay or DPC.

Internal Corner Detail

Rev: 1

Hi Five Residential Horizontal Cladding

Dimond Hi Five Horizontal
fixed Wall Cladding profile

Prefinished screw with
neoprene washer

Cavity Batten

Cavity drainage closure strip

Base flashing to match wall
cladding Materials & Fixings as per
Dimond Technical Data, E2/AS1 &
MRM Code of Practice

Wall Underlay
(shown dashed)

Wall framing
(indicative only)

Concrete Slab
(indicative only)

75 min.

Slab

50 min.

Refer Table

SOIL

GROUND CLEARANCE NOTE

	Application
25mm	Clearance at Garage door
35mm	Sheltered areas or cladding abutting a deck
75mm	Unlined buildings
100mm	Lined buildings and dwellings. Stone chip ground surface
150mm	Kept lawn ground surface
175mm	Pasture ground surface

GENERAL NOTE

Cavity battens or timber framing that contain copper must be seperated
from steel cladding by a strip of wall or roof underlay or DPC.

Base Detail

Dimond Roofing Profile

Roof Underlay
(shown dashed)

Purlins
(indicative only)

Roof framing
(indicative only)

100

Soffit lining

Flashing to match wall cladding
Materials & Fixings as per Dimond
Technical Data, E2/AS1 & MRM
Code of Practice

Prefinished screw with
neoprene washer

Dimond Hi Five Horizontal
fixed Wall Cladding profile

Wall framing
(indicative only)

Cavity Batten

Wall Underlay
(shown dashed)

GENERAL NOTE

Cavity battens or timber framing that contain copper must be seperated from steel cladding by a strip of wall or roof underlay or DPC.

COVER DIMENSIONS AS PER E2/AS1

Z

SITUATION 1

Low, Meduim & High Wind
Zones where roof pitch $\geq 10^\circ$
(Excludes any soft edge or turn-down)

50
MIN

SITUATION 2

All roof pitches in Very High zone.
Low, Meduim & High Wind Zones
where roof pitch $\leq 10^\circ$
(Excludes any soft edge or turn-down)

70
MIN

SITUATION 3

All roof pitches in Extra High zone.
(Excludes any soft edge or turn-down)

90
MIN

Soffit Detail

Rev: 1

Hi Five Residential Horizontal Cladding

Dimond Hi Five Horizontal
fixed Wall Cladding profile

Cavity Batten

Prefinished screw with
neoprene washer

Cavity drainage closure strip

Window head flashing min 15° fall to
top. Materials & Fixings as per
Dimond Technical Data, E2/AS1 &
MRM Code of Practice

Sealant used for very high
wind zones and above

Line of jamb flashing behind

Wall Underlay
(shown dashed)

Wall framing
(indicative only)

Wall lining
(indicative only)

50 min.
10 min.
cover

75 min.

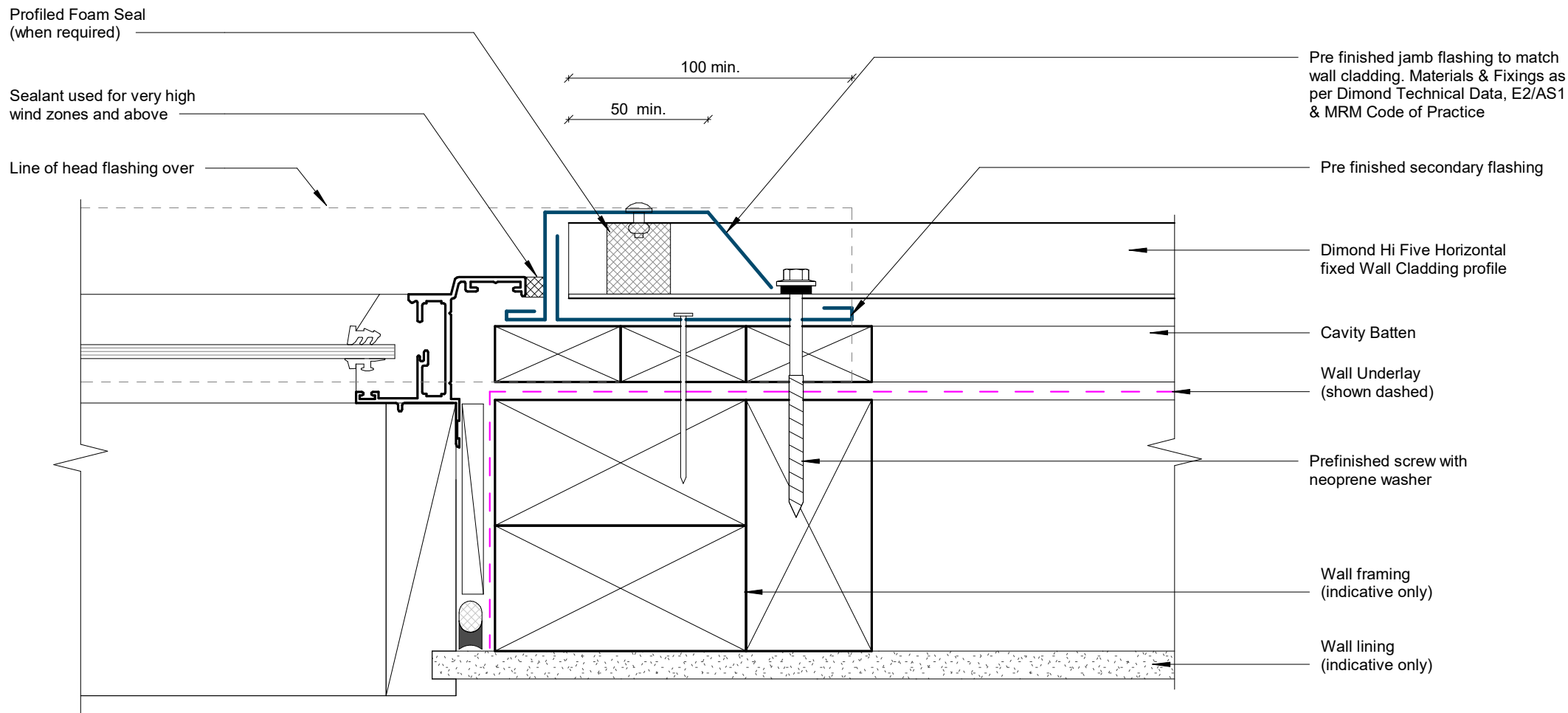
GENERAL NOTE

Cavity battens or timber framing that contain copper must be separated from steel cladding by a strip of wall or roof underlay or DPC.

Window/ Door Head Detail

Rev: 1

Hi Five Residential Horizontal Cladding



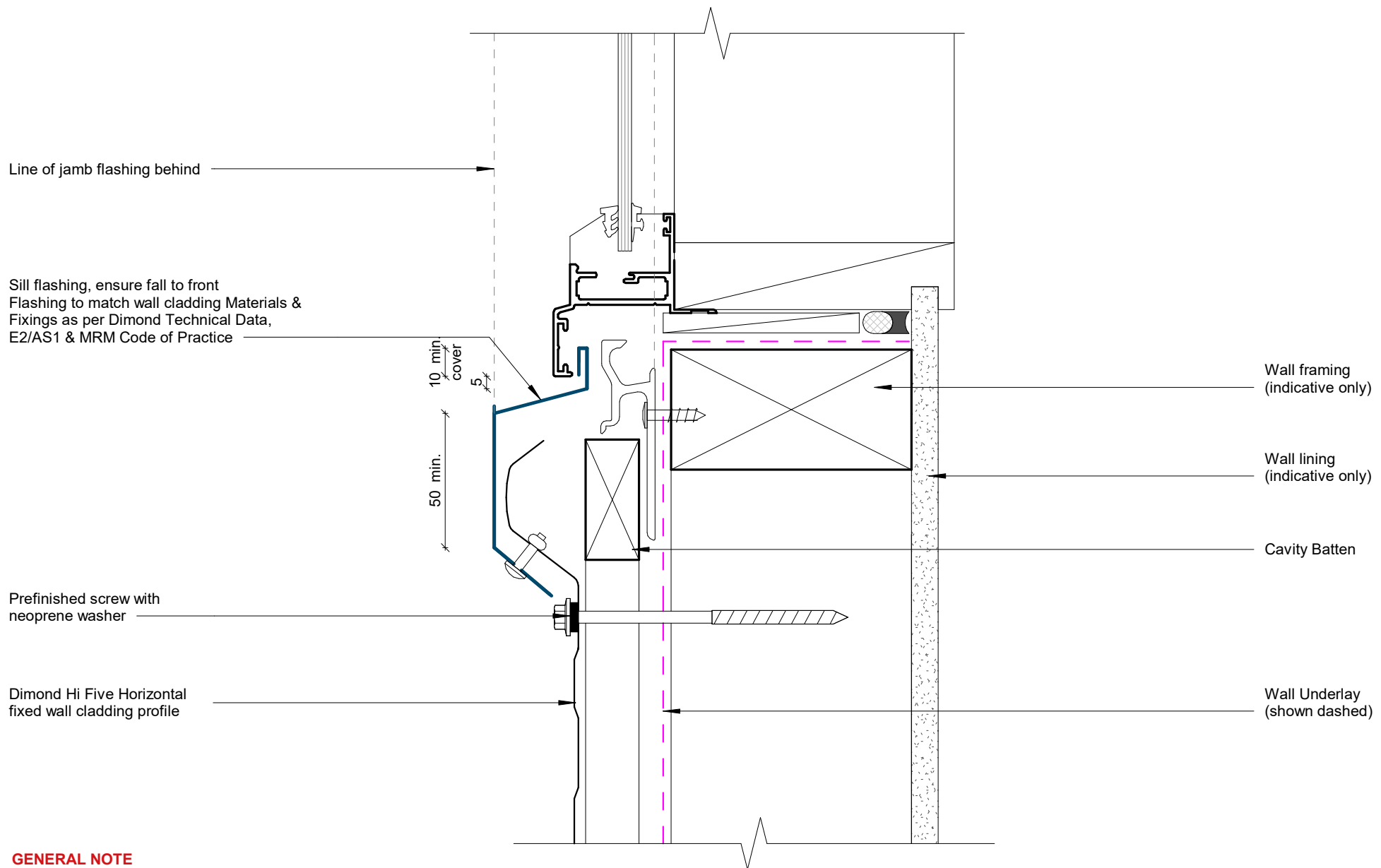
GENERAL NOTE

Cavity battens or timber framing that contain copper must be separated from steel cladding by a strip of wall or roof underlay or DPC.

Window/ Door Jamb Detail

Rev: 1

Hi Five Residential Horizontal Cladding



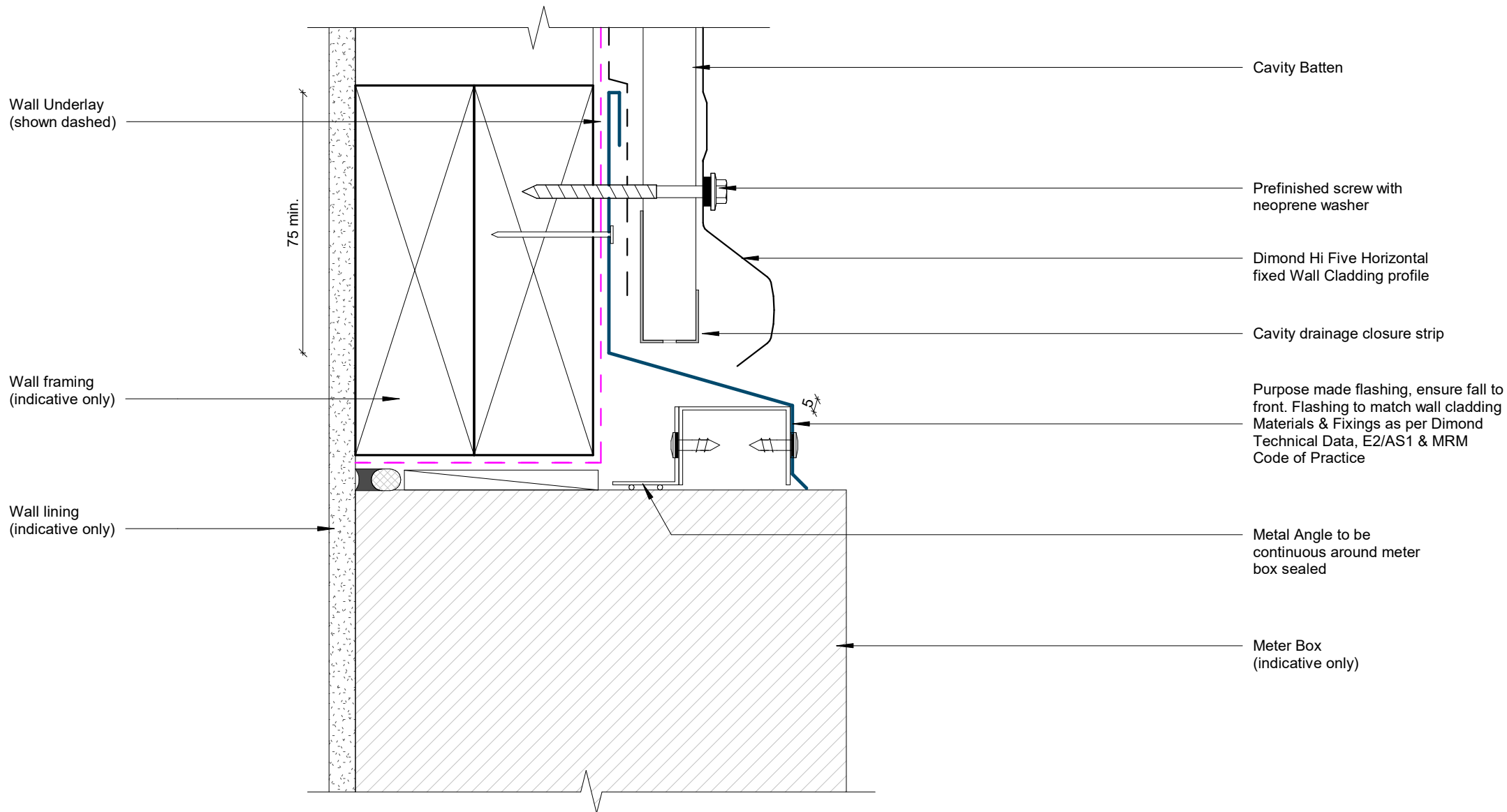
GENERAL NOTE

Cavity battens or timber framing that contain copper must be separated from steel cladding by a strip of wall or roof underlay or DPC.

Window Sill Detail

Rev: 1

Hi Five Residential Horizontal Cladding



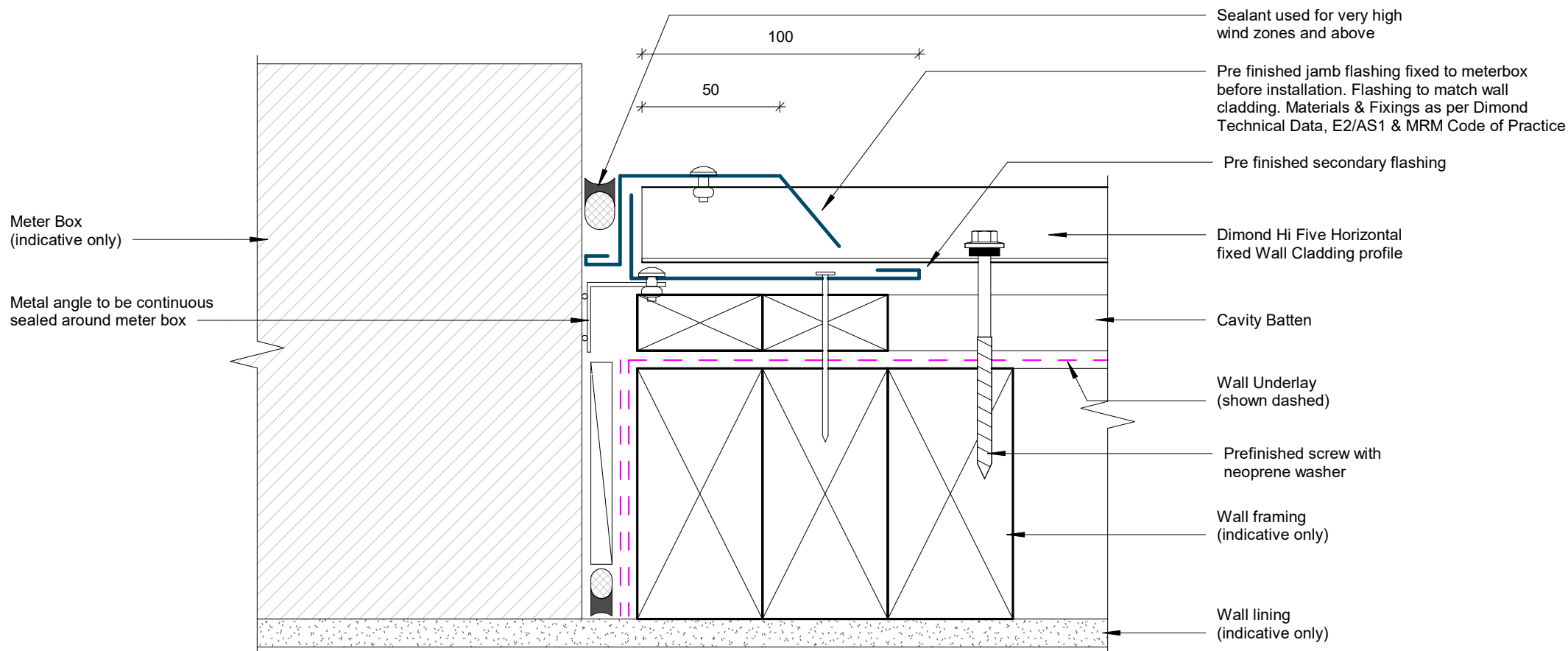
GENERAL NOTE

Cavity battens or timber framing that contain copper must be separated from steel cladding by a strip of wall or roof underlay or DPC.

Meterbox Head Detail

Rev: 1

Hi Five Residential Horizontal Cladding



GENERAL NOTE

Cavity battens or timber framing that contain copper must be separated from steel cladding by a strip of wall or roof underlay or DPC.

Meterbox Jamb Detail

Rev: 1

Hi Five Residential Horizontal Cladding

Meter Box
(indicative only)

Wall lining
(indicative only)

Air seal
(indicative only)

Cavity Batten

Wall framing
(indicative only)

Wall Underlay
(shown dashed)

Metal Angle to be
continuous around meter
box sealed

Pre finished flashing, ensure fall to
front. Flashing to match wall cladding
Materials & Fixings as per Dimond
Technical Data, E2/AS1 & MRM
Code of Practice

Prefinished screw with
neoprene washer

Dimond Hi Five Horizontal
fixed Wall Cladding profile

GENERAL NOTE

Cavity battens or timber framing that contain copper must be seperated from steel cladding by a strip of wall or roof underlay or DPC.

Meterbox Sill Detail

Rev: 1

Hi Five Residential Horizontal Cladding

Wall framing
(indicative only)

Solid blocking around penetration
with minimum 75mm overlap to
underlay

Pipe
(indicative only)

Wall lining
(indicative only)

Cavity Batten

Dimond Hi Five Horizontal
fixed Wall Cladding profile

Wall Underlay
(shown dashed)

Flashing tape around pipe
penetration (shown dashed)

Proprietary Boot flashing

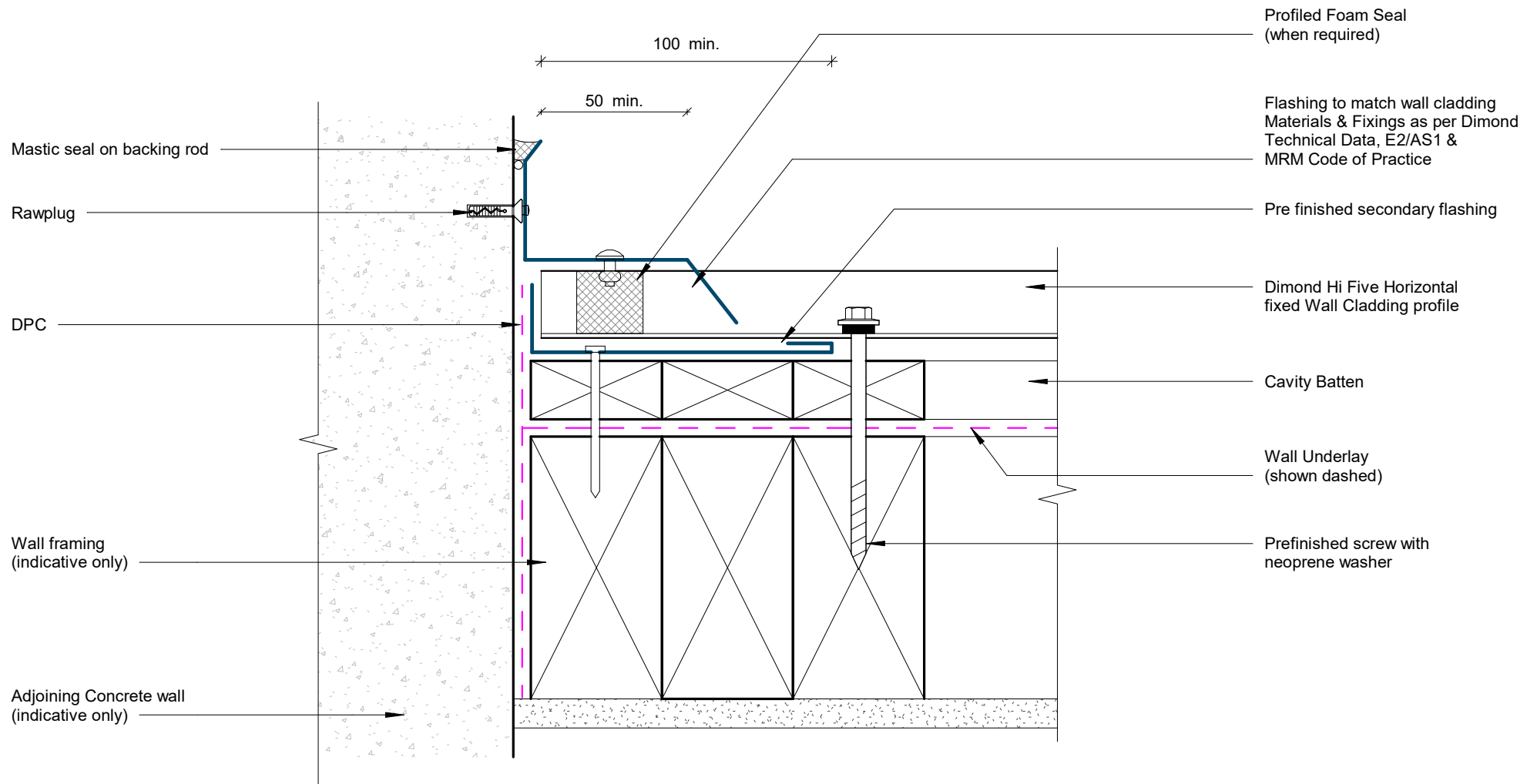
GENERAL NOTE

Cavity battens or timber framing that contain copper must be separated from steel cladding by a strip of wall or roof underlay or DPC.

Pipe Penetration Detail

Rev: 1

Hi Five Residential Horizontal Cladding



GENERAL NOTE

Cavity battens or timber framing that contain copper must be separated from steel cladding by a strip of wall or roof underlay or DPC.

Cladding to Concrete Junction Detail

Rev: 1

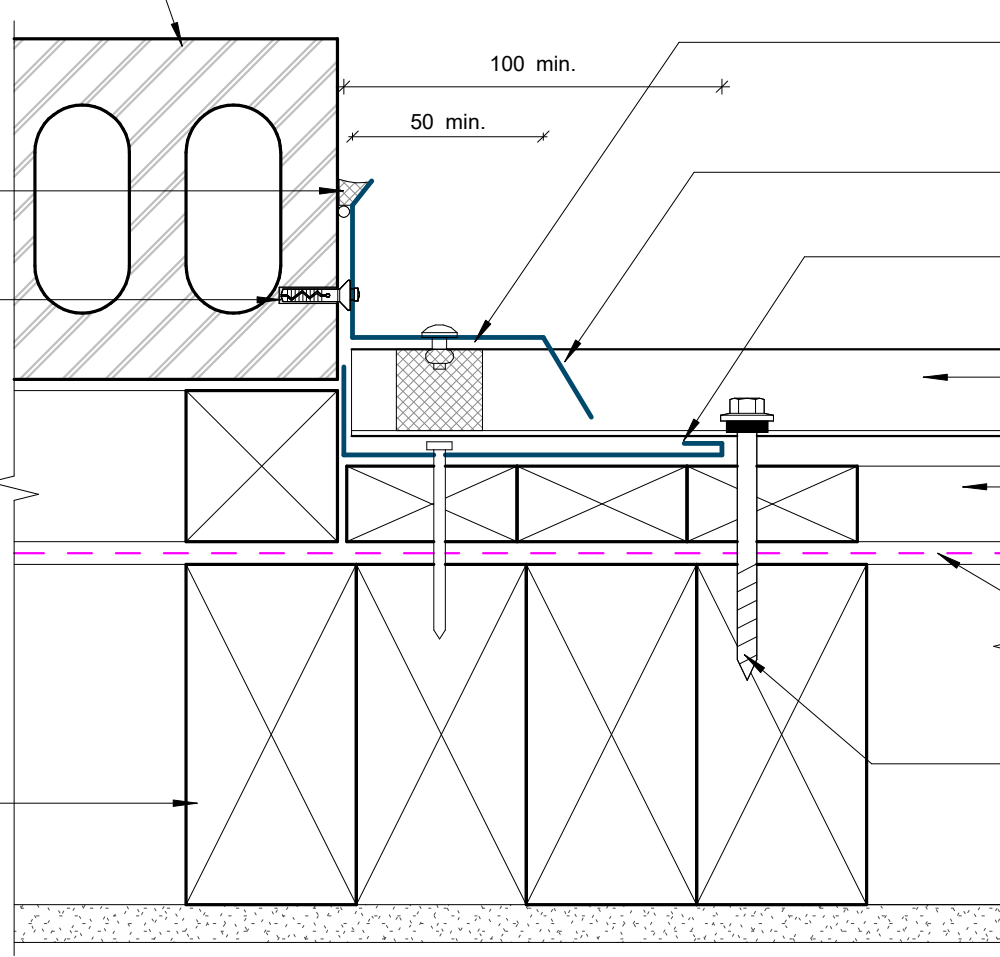
Hi Five Residential Horizontal Cladding

Adjoining Brick veneer on cavity
(indicative only)

Mastic seal on backing rod

Rawplug

Wall framing
(indicative only)



Profiled Foam Seal
(when required)

Flashing to match wall cladding
Materials & Fixings as per Dimond
Technical Data, E2/AS1 &
MRM Code of Practice

Pre finished secondary flashing

Dimond Hi Five
Horizontal cladding

Cavity Batten

Wall Underlay
(shown dashed)

Prefinished screw with
neoprene washer

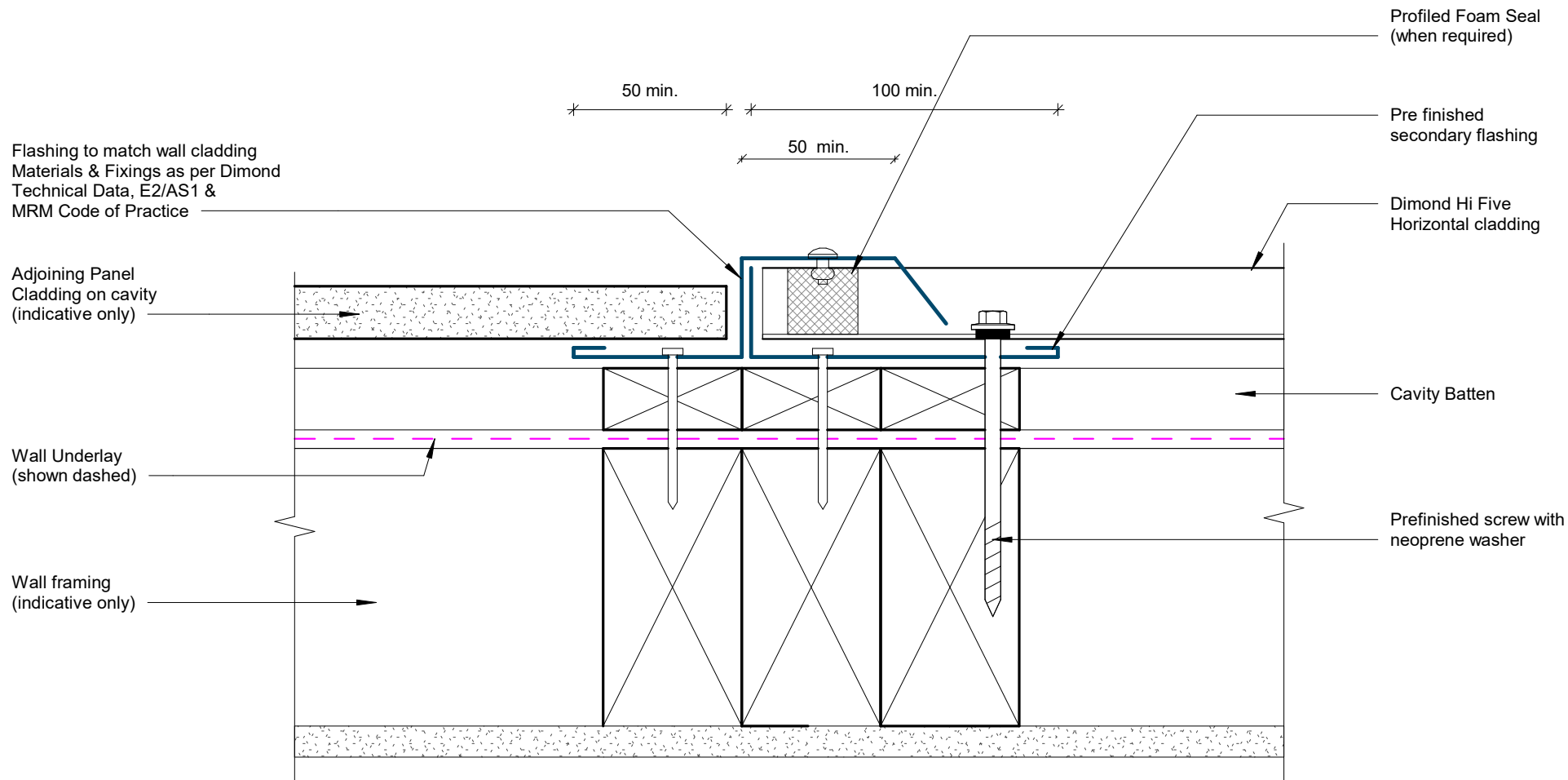
GENERAL NOTE

Cavity battens or timber framing that contain copper must be separated from steel cladding by a strip of wall or roof underlay or DPC.

Cladding to Brick Junction Detail

Rev: 1

Hi Five Residential Horizontal Cladding



GENERAL NOTE

Cavity battens or timber framing that contain copper must be seperated from steel cladding by a strip of wall or roof underlay or DPC.

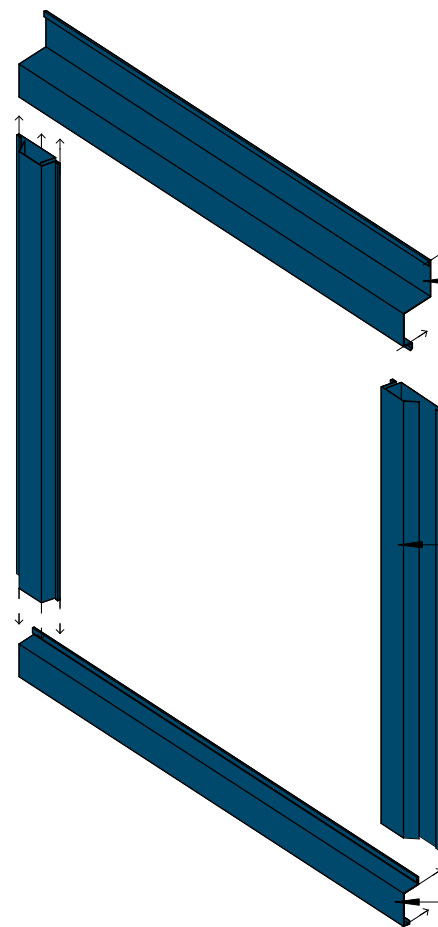
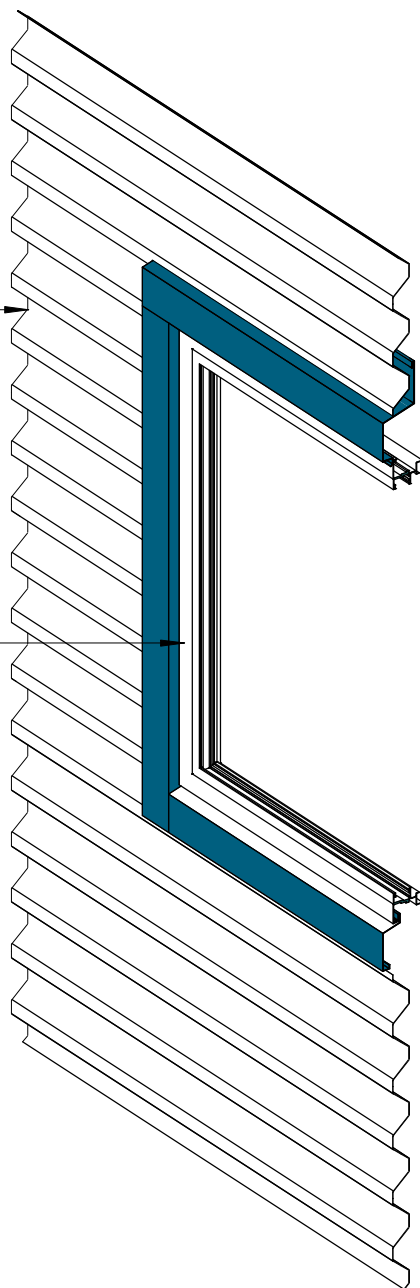
Cladding to Panel Junction Detail

Rev: 1

Hi Five Residential Horizontal Cladding

Dimondclad Hi Five
cladding

Aluminium joinery frame
(indicative only)



Pre finished head flashing min
15° fall to top

Pre finished jamb flashing

Pre finished secondary
flashing

Pre finished sill flashing,
ensure fall to front

3D Window Flashing Detail

Rev: 1

Hi Five Residential Horizontal Cladding